

# GLASS IS LIFE™

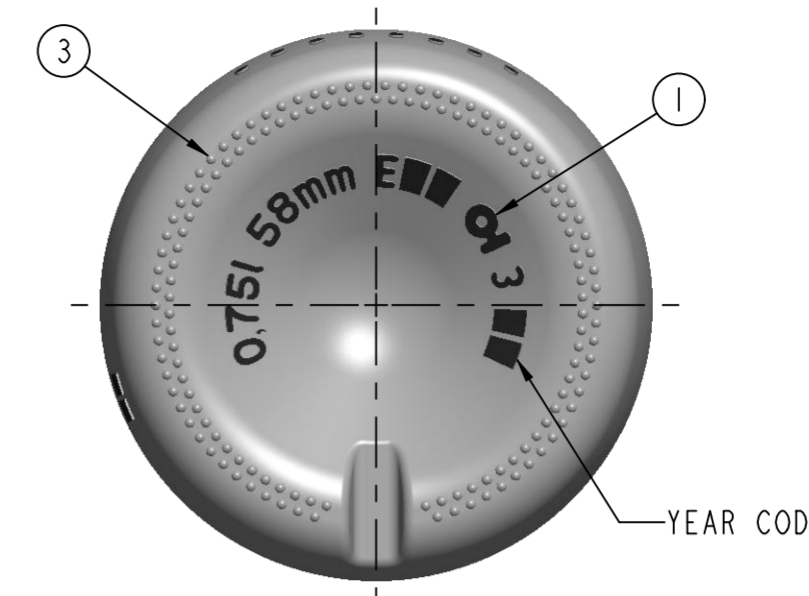
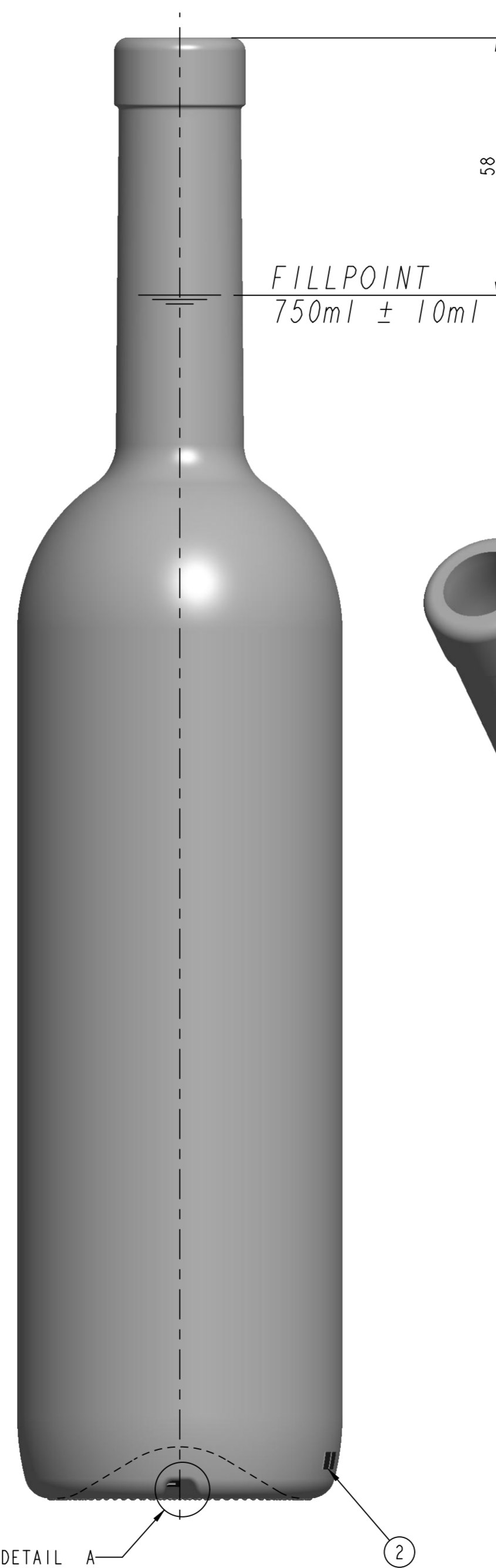
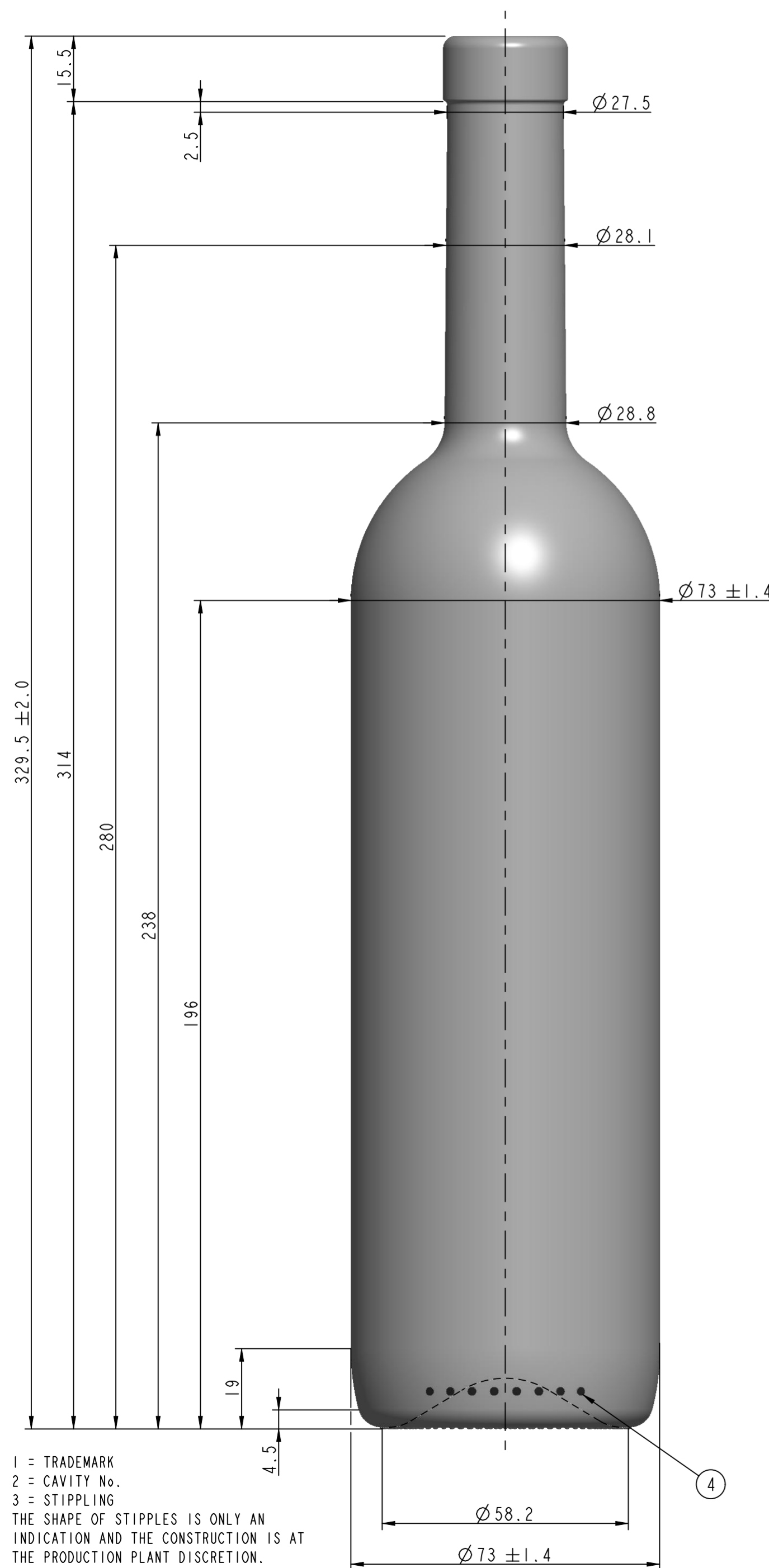
**O-I** makers of pure, sustainable,  
brand-building glass packaging

**O-I Sales & Distribution GmbH**

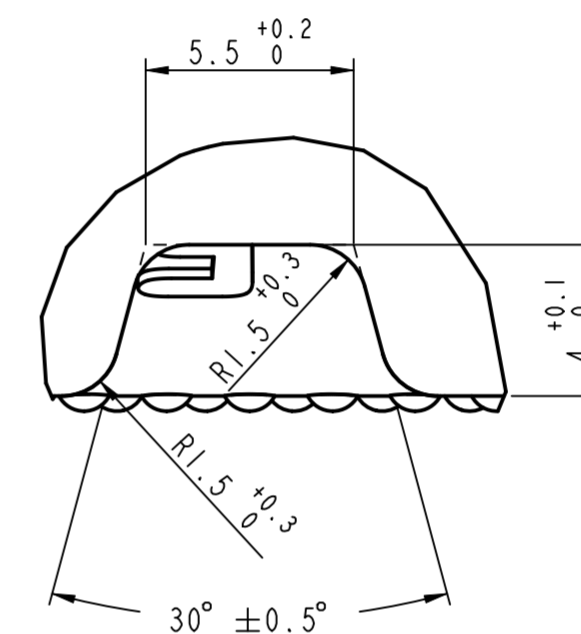
Goethestrasse 75  
40237 Düsseldorf, Germany  
Tel. +49 0211/2809-0  
+49 0211/932-0

**CONTAINER & MOULD ENGINEERING**

**EUROPE**



DETAIL A  
MASSSTAB 5/1



NOTES:  
THIS DRAWING IS THE PROPERTY OF O-I AND  
MUST NOT BE REPRODUCED OR DISCLOSED  
WITHOUT O-I WRITTEN AUTHORIZATION.

DIMENSIONS EXPRESSED IN mm  
ONLY TOLERANCED DIMENSIONS ARE GUARANTEED.

MANUFACTURING MARKINGS SHOWN ARE FOR ILLUSTRATIVE  
PURPOSES ONLY, ACTUAL MARKINGS ON CONTAINER  
MAY DIFFER, DEPENDANT ON LOCAL LEGISLATION.

1 = TRADEMARK  
2 = CAVITY No.  
3 = STIPPLING  
THE SHAPE OF STIPPLES IS ONLY AN  
INDICATION AND THE CONSTRUCTION IS AT  
THE PRODUCTION PLANT DISCRETION.  
4 = CAVITY CODE

SCALE 1:1

SIEHE DETAIL A

CATEGORY WINE	TILT ANGLE 13.91°
MAX. VERTICALITY TOLERANCE 3.6 mm	MEASURING CONTAINER NO
FINISH SAP NUMBER 4514	FINISH REF. SPECIAL
MINIMUM THROUGH BORE 17.0 mm	MAX FILLING TUBE $\phi$ 15 mm

CONTAINER OVERFLOW CAPACITY (BRIMFUL)

767ml APPROX.

CONTAINER RATED CAPACITY (FILLPOINT)

750ml  $\pm$  10ml

CONTAINER WEIGHT

490g APPROX.

FINISH DESIGNATION  
DE\_29\_SPECIAL\_H155\_4514

MAX GAS VOLUME

PROCESS  
BB

RETURNABLE  
NO

DESIGN REF.  
48-03731-08326

**0,75l BORDEAUX-AVANTGARDE**

DESIGNER D.Block DATE 18/04/17

CHECKED DATE

DRAWING NUMBER 170279 MOULD/SAP NUMBER 170279

No	DATE	REVISIONS	DESIGN/CHECK